



Libra Road, London, E3

BUTLER & STAG



Situated in a sought-after area, this three bedroomed flat/apartment offers the best of both worlds - a peaceful retreat from the hustle and bustle of the city, yet close to all the amenities you could need. The maisonette is located on Roman Road, a vibrant and diverse neighbourhood with a rich history and plenty of local shops, cafes, and restaurants to explore.



- Three Bedrooms
- Split Level
- Maisonette
- New Fitted Kitchen
- First Time Let
- Available 8th August
- Great Location
- Short Walk From Victoria Park

Welcome to this charming property located on Libra Road in the heart of Bow, London. This delightful flat/apartment boasts a spacious layout with 1 reception room, perfect for entertaining guests or simply relaxing after a long day.

Situated in the vibrant Roman Road area of Bow, E3, this 3-bed split-level maisonette offers a unique living experience. The property is available for rental and comes fully furnished, making it convenient for those looking to move in hassle-free.

The location of this property is truly unbeatable, with a plethora of amenities right at your doorstep. From trendy cafes and restaurants to local shops and parks, everything you need is within easy reach. The bustling streets of Bow offer a mix of modern convenience and historic charm, creating a wonderful atmosphere to call home.

Don't miss out on the opportunity to make this lovely property your own. Contact us today to arrange a viewing and take the first step towards living in this fantastic flat in the heart of London.





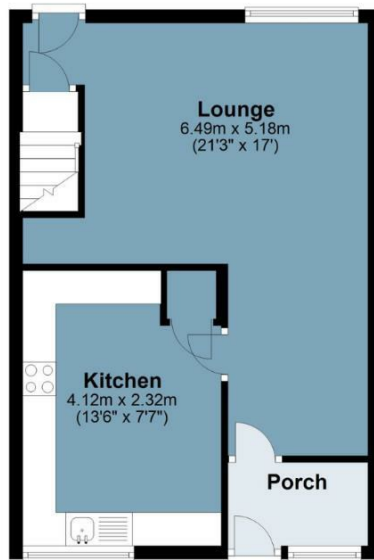
Mcbride House, Libra Road

Approx. Gross Internal Area 90.8 sq. metres (977.3 sq. feet)

BUTLER & STAG

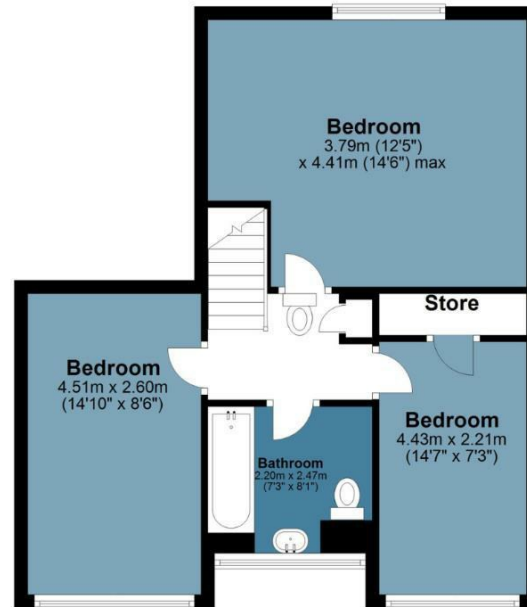
Ground Floor

Approx. 40.6 sq. metres (436.9 sq. feet)



First Floor

Approx. 50.2 sq. metres (540.4 sq. feet)



Measurements are approximate and for illustration purposes only. While we do not doubt the accuracy and completeness, we advise you conduct a careful independent assessment of the property to determine monetary value
© @modephoto.uk www.modephoto.co.uk

IMPORTANT NOTICE - These particulars have been prepared in good faith and they are not intended to constitute part of an offer or contract. We have not performed a structural survey on this property and the services, appliances and specific fittings have not been tested. All photographs, measurements, floor plans and distances referred to are given as a guide and should not be relied upon.

BUTLER & STAG

☎ 020 8102 1236

🏠 508 Roman Road, Bow, London, E3 5LU

✉ bow@butlerandstag.com

www.butlerandstag.uk